



## Setup Guide

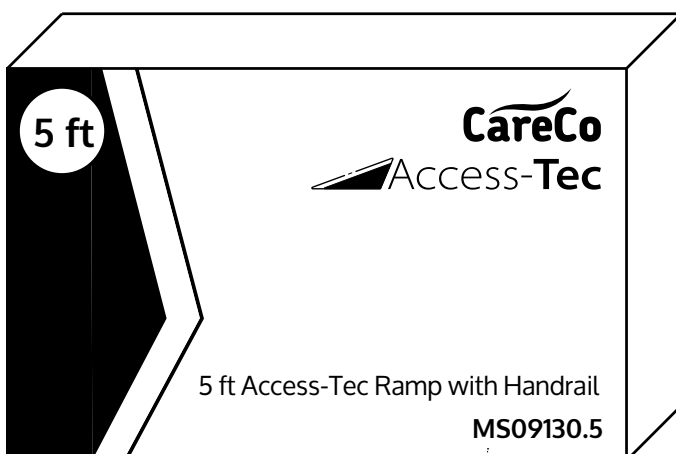
Product Code: **MS09130**



The Access-Tec Ramp comes in 3 sizes: 5ft, 6ft and 7ft, and they can all be assembled in the same way, demonstrated below.

How does the Access Tec Ramp arrive?

### Packaging

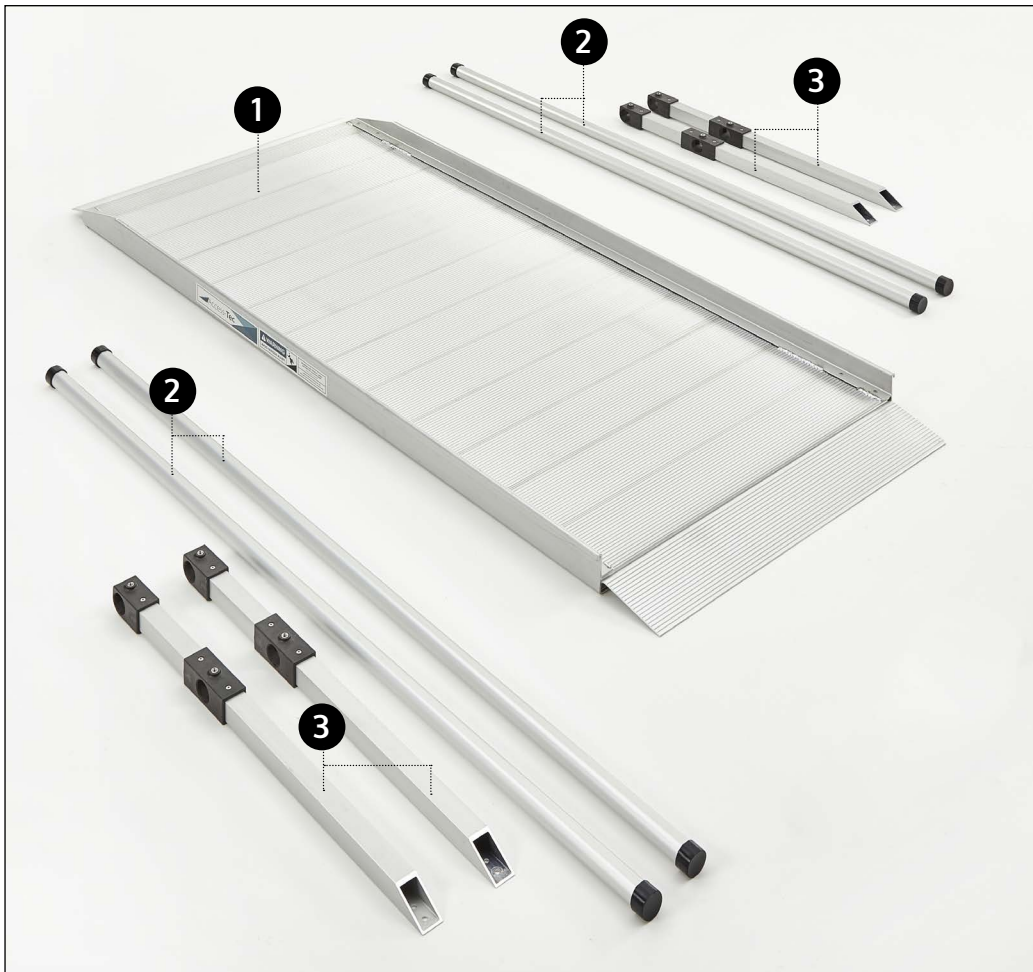


Product Code

### User Manual



## Parts Included:

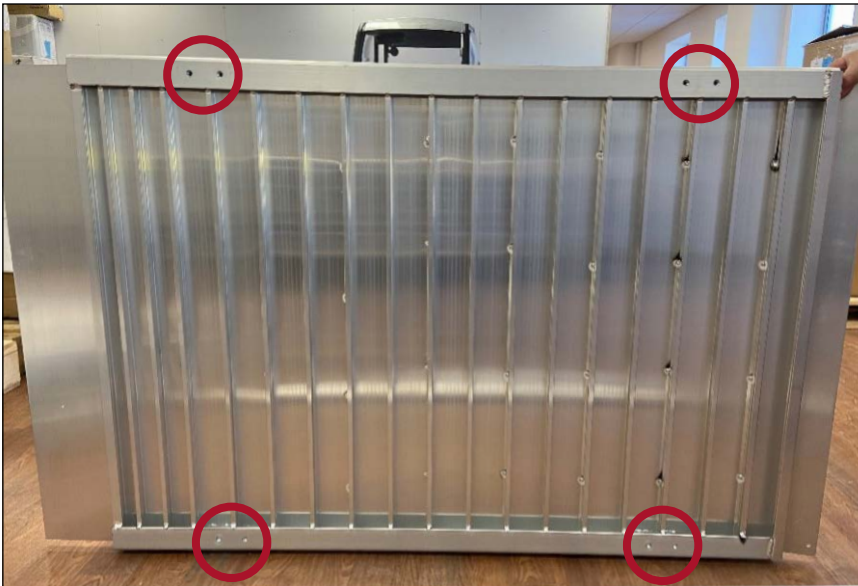


## Fixing Kit



- |    |                   |    |                 |
|----|-------------------|----|-----------------|
| 1  | 1x Ramp           | 2  | 4x Handrails    |
| 3  | 4x Vertical Posts | 4  | 4x Brackets     |
| 5  | 8x Lock Nuts      | 6  | 8x Set Screws   |
| 7  | 8x 25mm Hex Bolt  | 8  | 2x Allen Keys   |
| 9  | 16x Washers       | 10 | 8x Lock Washers |
| 11 | 2x Clevis Pins    |    |                 |

## How to assemble the Access Tec Ramp:

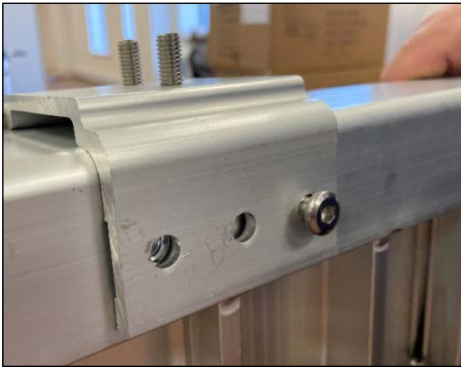


- Firstly, turn the ramp upside down. Locate the 4 holes found on either side of the ramp, as highlighted by the red circles.
- 



- Slide one of the brackets onto the ramp from the corner, lining up the two holes found on the bracket, with the two holes found in that corner of the ramp.
- The upper lip of the end of the bracket will extend into the groove under the ramp side rail.

- Secure each bracket into place with 2x 25mm Hex Bolts, 2x Washers and 2x Lock Washers (place the Lock Washer and then the Washer onto each Hex Bolt before screwing in).
- The bolts can be tightened with the Allen key supplied in the kit.
- Repeat this process for all four brackets at every corner of the ramp.

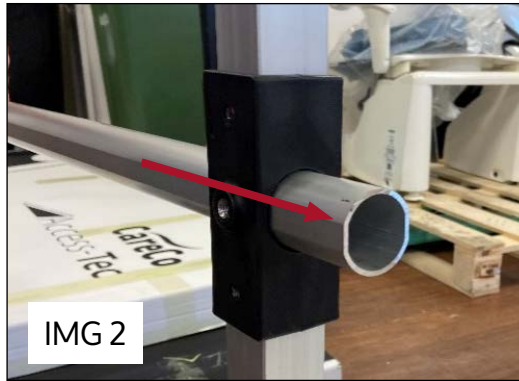


- You can then turn the ramp back over.



- Next, you want to attach the 4x vertical posts.
- Attach the vertical post onto the ramp, by sliding the holes at the bottom of the post through the studs on the outside of the ramp.
- Secure this with 2x Washers and 2x Lock nuts, using a 13mm socket.
- Repeat this process for all four vertical posts at each corner.

- Once the vertical posts are secured, you need to attach the handrails.



- First, remove the end caps so that the handrails can fit through the holes in the vertical posts (IMG 1).
  - The handrails should then be able to slide through, and can be secured by placing the cap back onto the end (IMG 2).
  - Repeat this so that there is an upper and lower hand rail on both sides of the ramp.
- 



- Finally, to secure the handrails in place, fasten with the set screws as displayed above.

## Fastening the ramp to the landing:

- Place the ramp's top lip transition plate so it extends onto the landing as far as possible.



### If using wooden landing:

- Fasten the top lip transition plate by installing one ¼ "x1" long self-drilling, stainless steel wood screw (not supplied) through each hole.

### If using a concrete landing:

- Use two pre-drilled holes in the top lip as a template to mark the positions to drill. Using a ¼ masonry bit, drill two holes at the marked locations. Drill to a depth specified by the pin anchor manufacturer's instructions.
- Use the two pre-drilled holes in the top lip transition plate as a template to mark the positions and drill two ¼ holes at least 1 ½ deep.
- After drilling, make sure that holes are free of any residue and/or debris.
- Insert the clevis pins (shown below) into the drilled holes through the holes in the top lip transition plate.

